



equinor

Sheringham Shoal Extension Project and Dudgeon Extension Project

Community Newsletter

February 2021

Introduction

Dear Norfolk community,

Welcome to the Community Newsletter for the Sheringham Shoal Extension Project (SEP) and the Dudgeon Extension Project (DEP). In this newsletter we will summarise what we learnt from our phase one consultation in summer 2020, present our latest proposals, and discuss the opportunities for you and your community to engage with us moving forward.

The SEP and DEP teams hope that you have started 2021 in a healthy manner. It's been a difficult start to the year, but I am hopeful circumstances will improve. Our first priority is to keep everyone safe. We apply this approach across our operations and activities – first and foremost for our teams in Egmere and Great Yarmouth. The same applies to our teams for SEP and DEP.

Despite Covid-19 we have been able to increase our insights into local conditions, including cable routing, construction methods and our consultation approach, among others. Continuous interaction with the community, stakeholders and representatives is critical for us. Unfortunately, until government guidance allows, we will be unable to meet you in person.

However, we are doing our utmost to be present and available for any questions you might have. Our community liaison officer - Nigel Tompkins - is always available to contact and our mailbox is open to any enquiries you might have. You can find these contact details at the end of this newsletter. In our second phase of consultation, we are committed to our efforts to meaningfully interact and communicate with you – through online meetings, working groups, and a range of online tools. For those, like me, who prefer to work on paper, we are catering for that as well.

This upcoming consultation will be crucial for us and we want to understand your feedback, thoughts and concerns. This feedback will help us define the project footprint and minimise disruption to local communities.



Stay safe and I look forward to our phase two consultation!

Kari Hege Mørk, Project manager

Sheringham Shoal Extension Project and Dudgeon Extension Project

As the operator on behalf of the partnerships, Equinor is bringing forward proposals to extend the existing Sheringham Shoal and Dudgeon offshore wind farms located off the North Norfolk Coast.

SEP and DEP will have the potential to generate a combined 719 megawatts (MW) of renewable power, capable of powering 820,000 UK homes.

We will apply for a joint Development Consent Order (DCO) which will be determined by the Secretary of State for Business, Energy and Industrial Strategy (BEIS). Submission of the joint DCO is indicatively planned for Q4 2021.



We are investigating offshore generating areas of up to 190 km² in total, where up to 56 turbines could be located.



Equinor has been offered a grid connection at Norwich Main Substation by National Grid. A site for the onshore substation area in the vicinity of the existing National Grid Norwich Main Substation is currently being identified.



We are seeking to minimise potential impacts on the community and the environment by adopting a shared onshore footprint for SEP and DEP.



SEP and DEP could generate enough electricity to power 820,000 UK homes.



About Equinor

Equinor is a broad energy company that has been operating in the UK for over 35 years and is the UK's largest energy supplier.

In the UK, we currently power around 750,000 homes through our three wind farms: Sheringham Shoal, Dudgeon, and the world's first floating wind farm, Hywind Scotland.

As a key contributor to the UK's efforts to meet its net zero carbon target, Equinor is leading the way in decarbonisation. Equinor supports the UK economy, investing billions of pounds in crucial energy infrastructure, employing 650 people that are based in the UK, and working with over 700 suppliers across the country.

Equinor's plans for SEP and DEP will double its offshore wind capacity off the coast of Norfolk. Equinor will also operate Dogger Bank, the largest offshore wind farm in the world, off the North East coast of England. When complete it will be capable of generating around 5% of the UK's electricity demand.

Dudgeon Offshore Wind Farm and Sheringham Shoal Offshore Wind Farm



Dudgeon Offshore Wind Farm is owned by Equinor, Masdar and China Resources. Sheringham Shoal Offshore Wind Farm is owned by Equinor, Equitix and Green Investment Group.



Both wind farms have established community funds of £100,000 per year which in total have awarded over £1 million to projects in Norfolk.



The funds were set up to provide grants to Norfolk community groups, including schools and non-governmental organisations (NGOs), seeking financial assistance for initiatives that focus on renewable energy, marine environment and safety, sustainability, or education in these areas.

What we've learnt

Our phase one community consultation for SEP and DEP provided an opportunity for people to view and comment on our early stage proposals.

The feedback we received as part of this consultation has helped to improve our understanding of the local area and the aspects of SEP and DEP that are important to the community for us to consider as we refine our proposals.

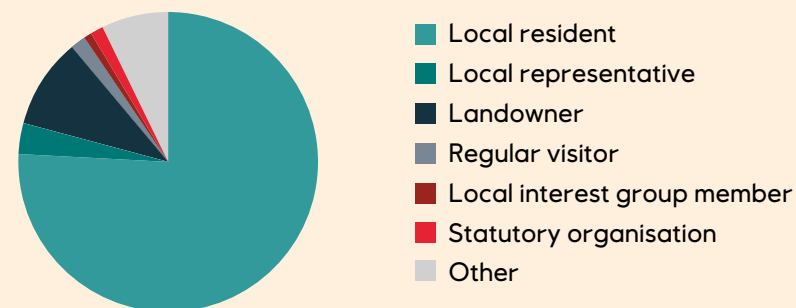
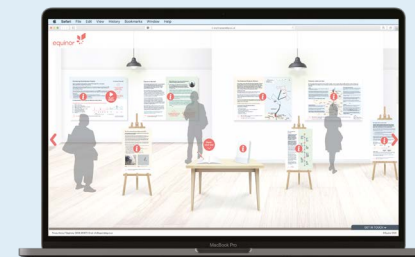


Figure 1: Chart showing breakdown of phase one consultation respondents

We welcomed over 1,700 visitors to our virtual exhibition.

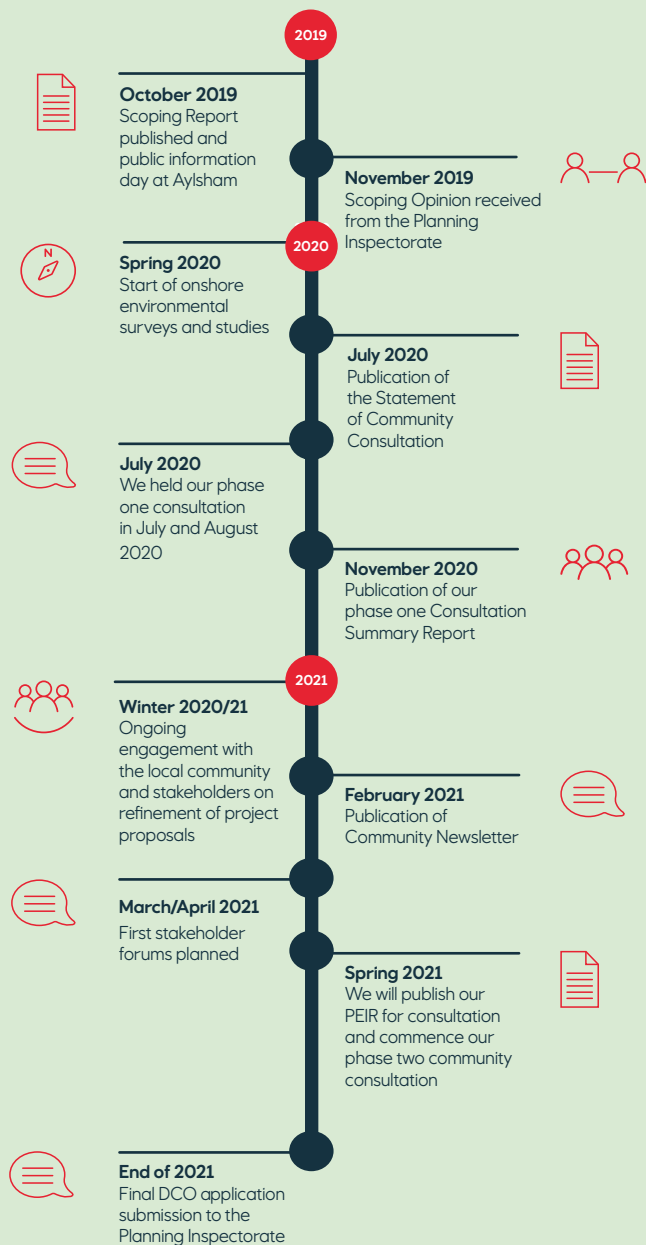
During our phase one consultation we received almost **300 pieces of feedback.**



A summary of the feedback we received during our phase one consultation is available in our Consultation Summary Report, which can be downloaded from our website: <https://sepanddep.commonplace.is/proposals/5-documents-library>

If you would like a hard copy of our Consultation Summary Report, please get in touch via the contact details on the back of this newsletter and we will send you a copy in the post.

Consultation timeline



Evolving our proposals: landfall

In May 2020 we communicated the decision to select Weybourne as the preferred landfall location for SEP and DEP. Weybourne was selected following a comparative assessment of different options along the North Norfolk coastline, taking into account environmental sensitivities and the technical feasibility of the landfall location itself.

Since our phase one consultation, through technical assessments and working with local stakeholders, we have identified a preferred landfall location to the west of Weybourne beach car park at the Muckleburgh Military Collection.

This location benefits from favourable conditions for Horizontal Directional Drilling (HDD) to install cable ducts beneath Weybourne beach, minimising disruption to the shoreline. Additionally, the Muckleburgh landfall location minimises the need for site access works that would otherwise be required for landfall to the east of Weybourne.

We will continue to engage with the local community, Parish Councils, and statutory stakeholders and will invite feedback on our proposed landfall location during our phase two consultation. This feedback will continue to help refine our proposals at this location.

The phase two consultation boundary will reflect the space under consideration for the landfall working area. This area will be further refined following our phase two consultation.

We will also seek feedback during our phase two consultation on the cable routing proposals from Weybourne to Bodham. Our goal is to select the best route from a balance of technical, environmental and landscape considerations, whilst minimising disruption to the local community.



A map of our refined landfall location to the west of Weybourne beach car park at the Muckleburgh Military Collection will be available at our phase two consultation.

Evolving our proposals: onshore cable corridor

Following our selection of Weybourne as the preferred landfall location, we have continued refining the one kilometre (km) wide onshore cable corridor that was presented in our October 2019 Scoping Report. As part of this we presented a refined onshore cable corridor during our phase one consultation in July and August 2020.

Using phase one consultation feedback, inputs from landowner discussions, environmental surveys, and engineering studies we have now identified an onshore cable corridor that is typically 200 metres wide.

The main principles that have informed the refinement of the onshore cable corridor include:

- avoiding populated areas where possible
- avoiding key sensitive features where possible
- a preference for the shortest route

A more detailed plan of the onshore cable corridor will be presented at our phase two consultation, where we will ask for your feedback to help further refine our proposals.

Choosing compound locations

Several onshore temporary construction compounds for material and equipment will be required. This will include several satellite compounds along the onshore cable corridor, and a main compound for project offices, welfare facilities, staff parking, and material and equipment storage.

We are in the process of identifying locations for the construction compounds. We are currently investigating areas with existing infrastructure to reduce the need for initial site establishment works. In order to minimise disruption to the local road network we are identifying the most suitable accesses to and from the compounds.

During our phase two consultation, we will present a number of potential compound locations and invite your feedback to these locations. Further targeted consultation will also be undertaken in relation to the main compound.

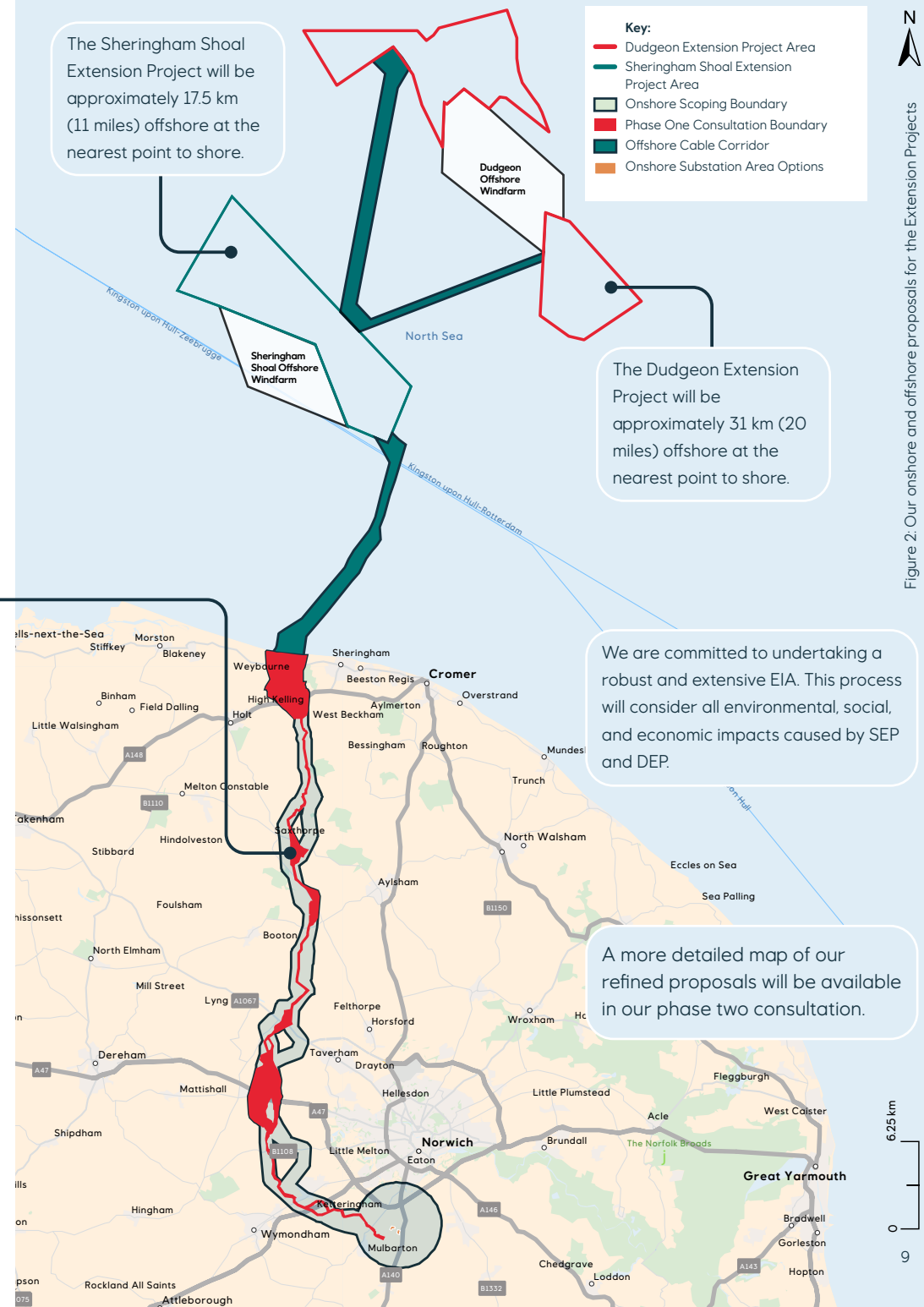


Figure 2: Our onshore and offshore proposals for the Extension Projects

Evolving our proposals: onshore substation area

Equinor has been offered a grid connection at Norwich Main Substation by National Grid. The site selection process for the onshore substation therefore began with a three km search area from the existing Norwich Main Substation.

Following the three km search area presented in our October 2019 Scoping Report, environmental constraints mapping enabled us to identify zones with the greatest potential to accommodate the onshore substation area. This was underpinned by a series of design assumptions and site selection principles, including avoiding areas of high value to the local community and maximising distance from residential areas. We then identified potential substation site options within the preferred zones.

Following a comparative assessment of a total of 17 options, the process identified five shortlisted fields for the onshore substation area, as shown in **Figure 3**. These fields were presented during our phase one consultation during July and August 2020.

In response to your phase one consultation feedback, and further environmental and technical assessment, we have now selected two preferred site options for the location of the onshore substation area, as shown in **Figure 4**.

A number of factors have influenced the selection of the two preferred sites. Both sites are close to the existing Norwich Main Substation and benefit from existing screening that restricts views from surrounding areas. The sites also allow sufficient space for the Hornsea Project Three connection to Norwich Main Substation.

Visualisations of the onshore substation area site options from key viewpoints will be presented during our phase two consultation, where we will ask for your feedback on both options.

Substation site access is an important consideration for determining our final preferred location. The phase two consultation boundary will reflect the ongoing work and engagement needed to refine the substation access options and temporary working areas.

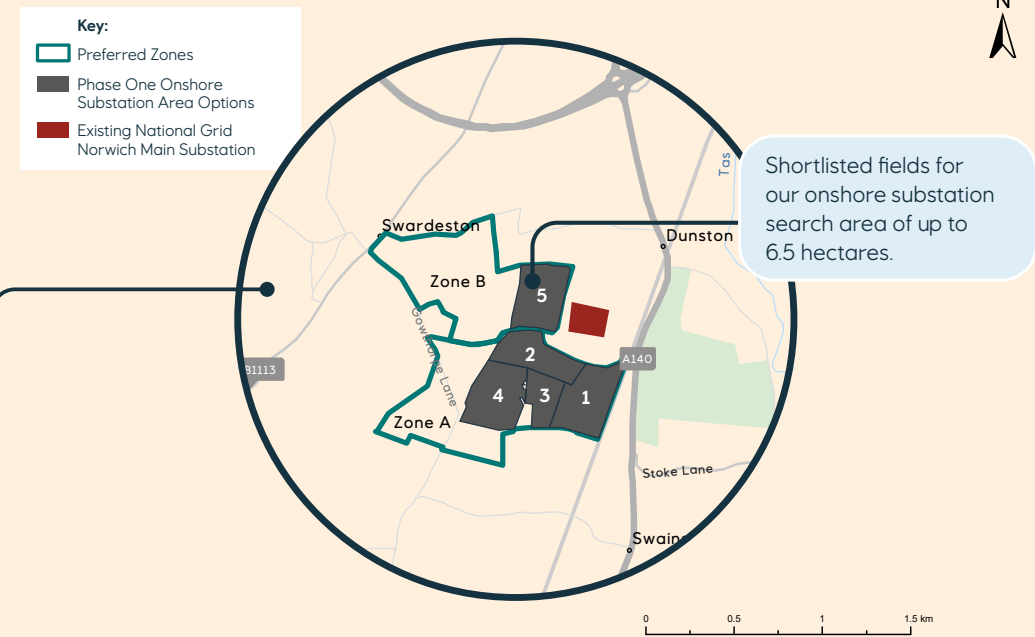


Figure 3: Map of shortlisted substation area fields presented at phase one consultation.

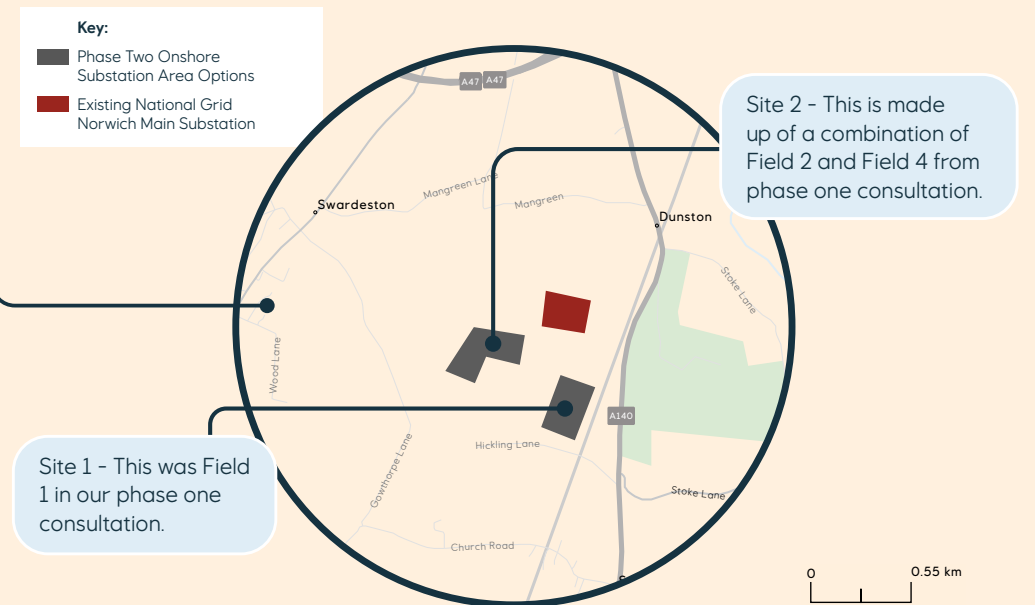


Figure 4: Map of shortlisted substation areas that will be presented at phase two consultation.

Next steps

We are currently in the process of undertaking a wide range of environmental assessment work, the outcomes of which will be presented in our Preliminary Environmental Information Report (PEIR), which we will invite feedback on during our phase two consultation. A summary of ongoing studies is presented below.

Ongoing Studies



Onshore and offshore ecology

We have almost completed the first phase of ecological surveys, which have collected baseline data about the habitats and species within the SEP and DEP onshore study area. All offshore ecology baseline surveys, including offshore ornithology, marine mammals and benthic ecology were completed in 2020, which concluded a two-year survey program. These results, alongside our survey of shipping and navigation, will be presented in our PEIR.

The second round of wintering bird surveys are underway and further surveys for species such as breeding birds, bats and aquatic mammals will commence in spring 2021.

We are also working with stakeholders including Natural England and local wildlife groups to identify opportunities to deliver biodiversity net gain for the onshore elements of SEP and DEP.



Landscape and visual impact

Both a Landscape Visual Impact Assessment (LVIA) and Seascape Visual Impact Assessment (SVIA) will be included in our PEIR. The assessments will consider the potential visual effects of SEP and DEP from a number of viewpoints, which have been agreed with the relevant local authorities and other stakeholders.

As part of our phase two consultation, we will also be producing indicative visualisations of the onshore substation and the offshore wind turbines from key viewpoints on the North Norfolk coast.



Traffic and transport

We are currently gathering baseline traffic flow and road safety data to inform our assessment work. We are also working with Norfolk County Council and Highways England to establish a construction traffic routing strategy which will be submitted as part of the DCO application.

The objective is to deliver SEP and DEP in the most efficient way possible, whilst reducing construction vehicle movements, avoiding sensitive locations, and minimising impacts on the local road network. This will also take into account other planned developments in the area.

We recognise that construction traffic is a key concern for local communities and any feedback received at phase two consultation will be valuable in helping to refine our traffic routing strategy.



Local archaeology

We are nearing completion of the onshore geophysical surveys that are being undertaken to investigate the archaeological potential within the onshore study area. The results of the surveys, along with other desk-based information will be presented in our PEIR.

The data will be used alongside feedback from the phase two consultation to refine the onshore cable corridor, avoiding where possible any areas of high archaeological importance.



Electric and magnetic fields (EMF)

We will be undertaking an EMF study to assess project specific EMFs along the onshore cable corridor. The study will assess the potential worst-case strength of EMFs, which will be applicable to all areas along the onshore cable corridor.

The purpose of this study is to demonstrate compliance with the relevant UK and international EMF standard rules and regulations.

These calculations will be performed by National Grid in accordance with relevant standards to provide impartial, accurate and reliable analysis.

Phase two consultation

Once we have finalised our PEIR, we will be holding a consultation and asking for your feedback on the information provided.

We currently intend to hold this in spring 2021. Due to government advice and restrictions on public gatherings owing to COVID-19, this consultation will be delivered without face-to-face events. However, we will provide a range of engagement options, as published in our Statement of Community Consultation (SoCC).

If it becomes possible to hold some face-to-face events, we will consult with the relevant local planning authorities and these will be publicised accordingly in local media and by other means.

We will distribute consultation leaflets to all properties within our Core Consultation Zone (of over 11,000 properties) prior to our phase two consultation, detailing the consultation dates and how to get involved. We will also advertise our consultation locally via local newspaper advertisements and posters at Local Information Points (LIPs).

In the meantime, we will be continuing engagement with all stakeholders, including parish, district, and county councillors. This includes holding a series of stakeholder forums with parish councils to discuss the latest proposals.

Stay informed

Community Liaison Officer



All our communication channels overleaf remain open for you to get in touch and ask any questions. You can also contact our Community Liaison Officer (CLO), Nigel Tompkins, who is based locally and available to answer any questions about SEP and DEP.

Should you wish to speak to Nigel or meet with him, please contact him using the details below:



Email: nigel@ni4b.co.uk



Telephone: 01263 822427 or 07860 206565

Landowner interests

If you are a landowner, have an interest in any of the land which interacts with our proposals, or if you have any questions relating to land interests in the area, please contact the SEP and DEP Land Team at Dalcour Maclaren by:



Calling: 01869 352725



Emailing: equinor.ukextensions@dalcourmaclaren.com



Alternatively, you can write to Simon Hinchliffe or Rhiannon Price at:
Dalcour Maclaren, 1 Staplehurst Farm, Weston on the Green,
Oxfordshire, OX25 3QU

Contact us

You can get in touch with our community relations team at any time by any of the methods below:



Send us an email: info@sepanddep.co.uk



Call our Freephone information line: 08081 963 673



Visit our website: sepanddep.commonplace.is



Send us a letter: FREEPOST DUDGEON AND SHERINGHAM EXT

Should you require this document in large print, audio or braille then please contact us using the details provided.

This document was sent in compliance with GDPR regulations. Your personal data will be stored in compliance with GDPR by Equinor and will not be shared with third parties. Your details may however be passed on to the Planning Inspectorate to ensure that our pre-application consultation is sufficient and in line with the planning process. We are available to answer any questions regarding GDPR compliance through the contact details above.



Follow us on Twitter: @Equinor_UK
#SEPandDEP

All image and graphics for illustrative purposes only.
For all sources please visit our website or contact a member of our team.
This has been printed on FSC certified paper.